



BEYOND FOR THE JOURNEY AHEAD



New Building. New Spaces. New Season.

The future of LCA depends on safe, modern, inspiring spaces. Trailers and shared gyms are no longer enough. We must build now to ensure every student has the tools - and the environment - to grow spiritually, academically, and socially.



EICHOOLS
HEALTH TEAM
EMERGENCY / 770-780-8001 / EICHOOLSHEALTHTEAM.COM

LCA Family Discount



HOME

PERIOD

GUEST

Handwritten notes on the door, including 'The Question' and 'The Answer'.



Welcome to VISION NIGHT

05.16.2025



“Watching our school grow and finally move toward a dedicated K–5 building is a dream I’ve held onto for 25 years. Each classroom will be a place where students feel safe, loved, and pointed to Jesus. What a joy to be part of a school where God’s work is so clearly on display!”

— Kit Wittner, Kindergarten Teacher

Table of Contents

06	Our Mission and Vision Remains
08	A Journey of Faith: History of LCA
12	A Defining Moment For LCA
14	What We're Building

16	Architectural Renderings
22	Frequently Asked Questions
24	What's Needed From You
27	Prayer Prompts





From the Head of School

Dear Loganville Christian Academy Family,

These are incredibly exciting days at Loganville Christian Academy! Since our founding in 1998, LCA has remained faithful to our mission: Loganville Christian Academy exists to prepare students academically, spiritually, and socially for God's call on their lives.

Over the years, we have seen God's provision and faithfulness time and again as our community has grown. From our earliest days to our current thriving campus, LCA has been rooted in a vision to educate and disciple students for an impact Beyond the LCA campus.

Today, we find ourselves at an important crossroads. We are out of space and preparing to take the next step in faith—developing a new academic building that will support our continued growth and enable us to serve students with excellence for years to come.

- This vision includes a new academic building, adding over 45,000 square feet of dedicated learning space to our campus, including classrooms, collaborative areas, essential student services, and an auditorium that will seat over 500 guests.
- This space will impact all students and faculty and allow for future growth in enrollment and programs.
- The goal of this campaign is \$8 million.

This is a bold step and we believe in a God who is bigger than any number. He has provided for LCA through every season, and we trust Him to continue guiding and providing as we walk forward. We are seeking to raise the full \$8 million over the next three years.

We are expectant and hopeful for the future of Loganville Christian Academy. With roots firmly established in Christ, we are ready to grow and provide the space and support our students need to thrive—academically, spiritually, and socially.

Would you prayerfully consider a sacrificial three-year commitment to this campaign as we continue to look Beyond?

With gratitude and anticipation,

Rachel N. Ernst

Rachel Ernst, Head of School



Our Mission & Vision Remain

Mission Statement: LCA exists to prepare students academically, spiritually, and socially for God's call on their lives.

Expanding Minds. Reaching Hearts. Enriching Lives.

LCA is committed to providing a rigorous and robust educational experience for all of our students. During the 2024-2025 school year, 72% of the senior class took one or more Advanced Placement (AP) classes or Dual Enrollment (DE) classes, earning a total of 978 college credit hours. 97% of the class took at least 1 Honors class. The Class of 2025 earned over \$6.8 million in scholarship offers, not including HOPE and Zell Miller. LCA's AP pass rate significantly exceeds the national average. Along with this, our curriculum maintains a Christ-centered focus that challenges students to think critically and lead confidently. College acceptance rates remain strong and our graduates step into the world not only ready for what is next, but ready to influence it for the kingdom of God.

We remain deeply committed to the foundation that sets LCA apart.

Every child is known, seen, and loved—not only by their classmates and teachers, but by a community that partners with parents to help students become all that God created them to be. Our low student-to-teacher ratio ensures that no student is lost in the crowd. Whether they are in Pre-K or preparing for college, students are mentored by faculty who care deeply about their academic progress, spiritual formation, and individual character. That commitment will never change.

Our students continue to thrive academically.

In the 2023-2024 school year, LCA students achieved record-breaking success in Advanced Placement (AP) courses, with 84% earning qualifying scores. In 2025, 51 students passed more than 93 AP exams across 18 subject areas. LCA's AP pass rate significantly exceeds the national average, while our curriculum maintains a Christ-centered focus that challenges students to think critically and lead confidently. College acceptance rates remain strong, and our graduates step into the world not only ready for what's next—but ready to influence it for the Kingdom of God.



01



02



03



04

Our culture is strong, prayerful, and full of life.

From Christmas plays and Field Day to student ambassadors and servant leadership opportunities, LCA is more than a school—it's a vibrant, Christ-honoring community. Parents, grandparents, and volunteers are woven into the fabric of daily life. Our leadership continues to seek God in every major decision, and students are encouraged to do the same. Here, prayer is not an add-on. It's a foundation. And as we grow, we do so prayerfully, intentionally, and with an unwavering commitment to the values that have made LCA a place where families belong.



05

- 01. Front entrance of first official LCA building, built in 2003
- 02. One of three students baptized during school Chapel in Spring 2025
- 03. Senior Project Presentations
- 04. Student prays at Lower School Chapel
- 05. Students enjoy fellowship during outdoor class project



A Journey of Faith: History of LCA

1998**LCA opens out of FBC Loganville**

Using classroom space at FBC Loganville, a new, independent, K-6 school called Loganville Christian Academy opened its doors in the fall of 1998.

1999**LCA purchases and prays over land**

The Lord was faithful in providing a 46-acre property, securing what would become the school's permanent home. The LCA community gathered on the land to pray and plant mustard seeds as a symbol of faith in God's continued guidance.

2003**The opening of LCA's first official building**

Due to the generosity of LCA parents, LCA secured the funds needed for the first building. Nearing the completion phase, parents, students, and staff were invited to cover the concrete floors in scripture, a tradition that has been upheld for every building on campus.

2005**The first LCA graduating class**

In the spring of 2005, LCA celebrated its very first graduating class, consisting of 12 students. These would be the first LCA alumni, with many more to join in the years to come.

2006**Modular classrooms are donated**

LCA experienced a remarkable blessing when larger Atlanta-area Christian schools generously donated modular classrooms to the growing LCA. This gift was a powerful reminder of how God faithfully provides for the needs of His people.

2009**The Lodge and Ball Fields**

Thanks to the support of the trustees and LCA Family, the Lodge, athletic fields, and roads were successfully built in one of the most challenging economic seasons in LCA's history.

2013**The Barn**

The growth of the athletic program quickly dictated the need for a larger training facility. LCA families rallied their financial resources, their skill-expertise in the construction industry, and their time to see The Barn constructed on campus debt-free.

2022**The Courthouse**

The outdoor basketball courts were transformed into a dynamic space, now known as The Courthouse. This vibrant hub serves as a home for PE classes, athletic practices, summer camps, and youth programs that fuel growth among all students.

2023**The Den**

LCA cut the ribbon on The Den in the fall of 2023. This new facility would be used as a space for classrooms, events, and a concession stand, serving both students and the community.

2025**Tennis & Pickleball Courts**

LCA's long-awaited tennis and pickleball courts were completed in the spring of 2025. These courts will be used to expand both the tennis program and the athletic department as a whole.

2026**Lower School Building & Performing Arts Center**

Coming in 2026, LCA will open the doors of a new lower school building and auditorium, providing new spaces and opportunities for all ages.



2003



1999



2005



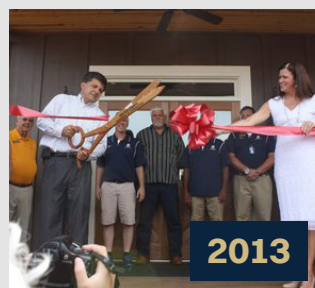
2006



2009



2025



2013



2022



2023



2026



01



02



03



04



05



06



07



08

“

Although our family has only been at LCA for a few short years, the Fortson Five (4 of us spend our days here) feel like this community has been our home for much longer. As a 16 year public school teacher and the daughter/granddaughter of public school teachers, private Christian school was never on my radar for my kids or for myself. However, the moment I stepped foot on LCA's campus God began prompting my heart and revealing the possibilities only He could provide for my family here. The Biblical principles that LCA is rooted on means the adults pouring into my own children each day have a common center - Christ. It also means that I, too, can pour these truths over my own students each day without hesitation and can lean into colleagues who will pray over me and alongside me, my family, and my students. While I already believe our campus to be beautiful, I am thrilled to embark on this new Capital Campaign because it will ultimately provide a safe, sturdy space for ALL of Lower School classrooms to be together under one roof. This common area will only strengthen our LS family and create more opportunities for us to grow together - whether that be spiritually or professionally speaking. God is good and He is moving in this place. This is kingdom work and we are here for it!”

— Lauren Fortson, 3rd Grade Teacher

- 01. Upper School Breakaway, 2025
- 02. Student arrives for first day of school
- 03. Field Day
- 04. Third Grade Play
- 05. Fifth Grade Messy Day
- 06. Kindergarten Graduation
- 07. Interpretive Dance Recital
- 08. Student enjoys class

Why Now? A Defining Moment for LCA

At Loganville Christian Academy, we have always believed that preparing students for life means preparing them for more than just graduation. It means equipping them academically, spiritually, and socially for God's unique calling on their lives. That mission has guided our steps from the very beginning.



01

Today, our mission brings us to a turning point.

LCA has experienced remarkable growth in recent years: more students, more programs, and more opportunities for Kingdom impact. Our reach is expanding, and the lives being transformed through this school are growing in both number and depth. But with this growth has come a pressing challenge. Our facilities can no longer keep up.

While God has blessed us with nearly 80 acres of land, our classroom space, especially for our youngest students, is at capacity. The modular buildings in "The Village," which currently serve our Pre-K and Kindergarten students, were never intended to be permanent. These trailers, though functional in their time, are no longer adequate or reflective of the excellence we strive for.

01. Graduation, Class of 2025
02. Upper School Breakaway, 2024
03. Field Day, 2025



Meanwhile, our upper school programs are also stretched. We've maximized every square foot. Classrooms are re-purposed daily. Schedules are bent to fit chapel, lunch, and rehearsals into the same gym. And still, we find ourselves short on space. We are not just growing; we are overflowing.

This campaign, Beyond: Opening Doors for the Journey Ahead, is our faithful response to this moment.

The new Lower School building will provide us with permanent, purpose-built classrooms for Pre-K through 5th grade. The new Performing Arts Center will allow us to reclaim the gym, giving our arts programs a proper stage and our athletic programs the freedom to grow. The Lodge will become a dedicated Middle School space, and new traffic patterns and facility layouts will increase safety and accessibility for all.

And yet, this campaign is about more than buildings. It is about what happens inside them. It is about opening doors for the next generation to grow in their identity, in their leadership, in their calling, and in Christ. We have come so far, but the work is not finished.

We believe God is calling us not to settle for “good enough.” He is calling us to move beyond what is comfortable, what is familiar, and what is easy. It is time to step boldly into a new season of mission and ministry.

Because if we do not expand, the cost will be great.

We will continue to lose prospective families who seek excellence but cannot see it reflected in our spaces. Our ability to serve well will be limited by a lack of infrastructure, and the incredible momentum God has given us could begin to stall at the very moment the opportunity is greatest.

This is our moment to build: not just buildings, but legacy.

To grow: not just in size, but in impact.

To open the door: and walk forward in faith.

Let this campaign be the moment we all reach for the same doorknob and open the future, together.



02



03

“ One day, the doors we build together will close behind students as they leave our campus... and open again when they step into the world as confident, Christ-centered men and women, ready to serve, lead, and love. That is our “why.” That is what Beyond means. That is the door we are opening, together.”

— Rachel Ernst, Head of School



BEYOND

FOR THE JOURNEY AHEAD

A Vision That Opens Doors

At Loganville Christian Academy, our mission is clear: to prepare students academically, spiritually, and socially for God's call on their lives.

As our community grows and our impact deepens, the need for permanent, purpose-built learning environments has never been more urgent. This campaign is our bold step forward: a vision that opens doors to transformational education, lasting legacy, and meaningful connection. The project is more than a construction plan; it is an investment in the lives of students who will walk through these doors and into their future.

The new 45,000 square foot facility will house 23 state-of-the-art classrooms, including specialized Early Education spaces with in-room restrooms, a Lower School Innovation Lab, and a dedicated playground designed for exploration and joy. A new 569-seat auditorium, the Performing Arts Center, will provide space for chapel, fine arts, and community-wide events. The building also includes a new cafeteria, office space for Lower School leadership and academic support, and upgraded technology and security throughout.

By updating the Lodge and the Upper School Building as part of this plan, we will create a seamless and connected experience between all divisions—opening doors not only to new spaces, but to the kind of education that changes lives.



In total, this project will require \$8M.

Total cost of new construction: \$6.7M
Finishing & furniture for new building: \$500k
Updating The Lodge and Upper School
Building classrooms: \$800k

All of this provides:

- 45,000 sq ft
- Auditorium that will seat over 500 people
- New lunchroom space
- Office space for Lower School Leadership and Academic Support
- 23 classrooms
- Early Education classrooms with restrooms
- Applicable technology and security
- Lower School playground
- Lower School Innovation Lab

“

What a privilege we have to lead the next generation to Jesus through the avenue of education. It is a responsibility that I don't take lightly. Working at LCA is a career or a job, sure. But, it is so much more. It is a calling, a privilege, and a ministry. I feel like my view of generosity became clearer when I joined our LCA team. Additionally, since enrolling my own children at LCA, I have had a front row seat to the immeasurable impact LCA has on a student's life.

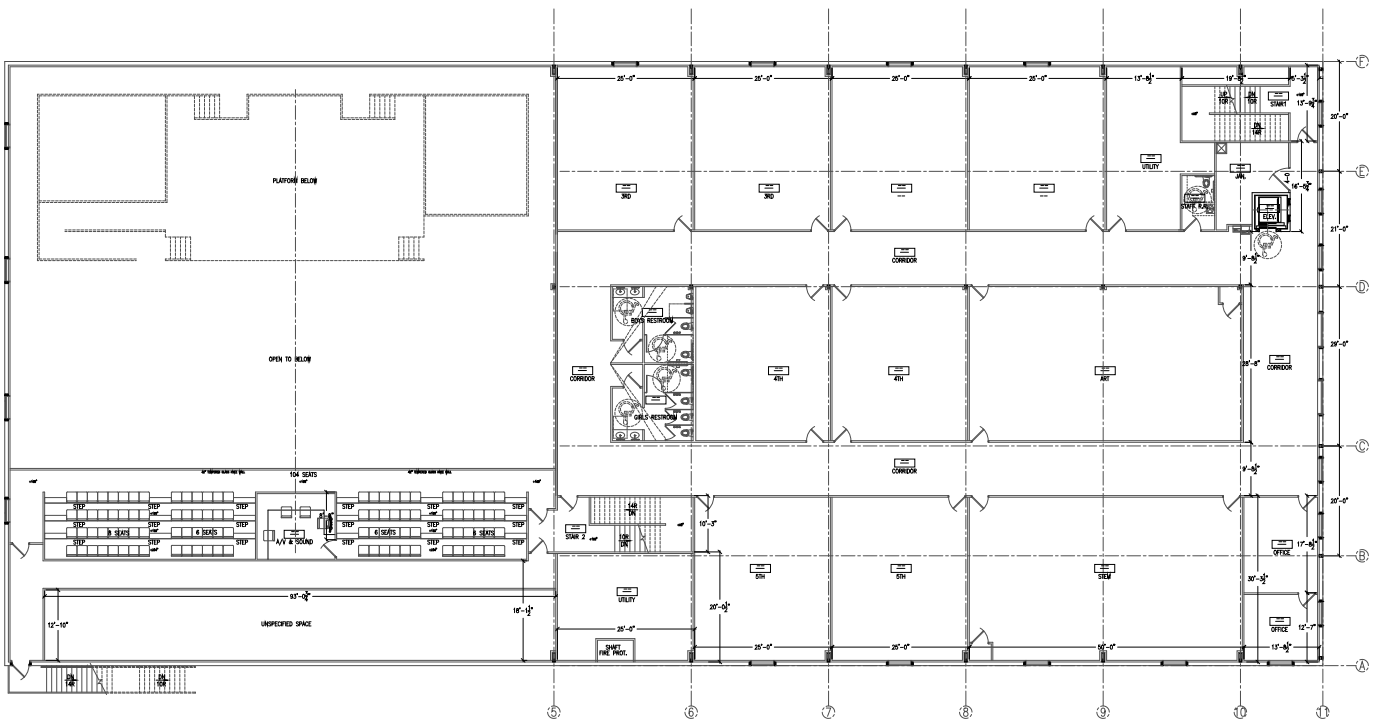
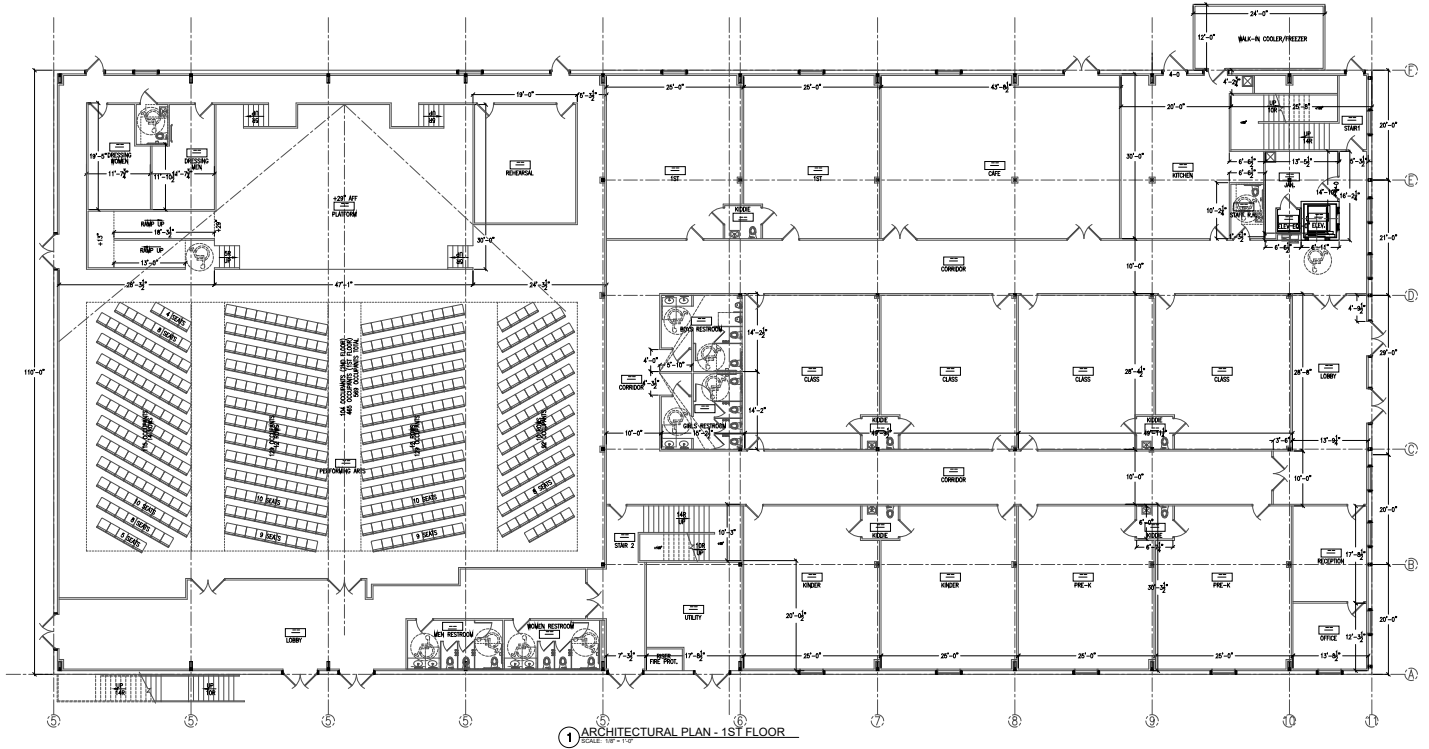
I am not saying that generosity is contingent to where you send your children to school or where you are employed. For me, generosity is directly connected to my trust and faith in God's provisions. It is being a good steward of what He has allowed in my life. Scripture states in Luke 16:10, "Whoever can be trusted with very little can also be trusted with much."

Where we choose to send our children to school is definitely "much." Our choice to be generous comes from following His will for our lives and helping to extend the mission of LCA. As I follow God's plan for my life, I realize that my faithfulness in small things is a reflection of my character and my spiritual walk. My husband and I want to do what we can to help the mission of LCA. We have been LCA parents for 14 years now and our focus on sharing the importance of Christian education has only grown each year."

— Kelly Loyless, Lower School Principal



Architectural Renderings





Front entrance of new building

One building. Two bold purposes.

Opening doors to learning and worship.

This isn't just about buildings. It's about lives shaped, gifts discovered, and faith formed.

This bold new addition to campus is a single structure with two transformative purposes: a permanent Lower School academic building and a state-of-the-art Performing Arts Theater. Together, they form one united vision: to create space where students can grow in knowledge, creativity, community, and faith.

- 18 classroom lower school academic building
- Dedicated 500+ seat theater for chapel, fine arts, and events
- Full service kitchen and cafeteria
- Safe, modern learning environments for 350+ students
- New connections between lower, middle, and upper schools

Timeline:

1. Groundbreaking (Fall 2025)
2. Construction
3. Grand Opening (August 2026)



"Unless the Lord builds the house, the builders labor in vain." - Psalm 127:1



1st Grade Classroom



Full service kitchen and cafeteria

Lower School Additions



STEM Classroom

Seat count for 1st floor is 10 classrooms, kitchen and cafeteria, up to 20 student seats in each classroom. Seat count for 2nd floor is 10 classrooms, up to 20 student seats in each classroom.

The building also includes a new cafeteria, office space for Lower School leadership and academic support, and upgraded technology and security throughout.



5th Grade Classroom



The new 569-seat theater will be used for chapel, fine arts, and events.



The new 569-seat theater will be used for chapel, fine arts, and events.

Performing Arts Center



The new Performing Arts Center will allow us to reclaim the gym, giving our arts programs a proper stage and our athletic programs the freedom to grow.



Lower School Lobby creates an inviting entrance to the building.

Frequently Asked Questions

1. Why is LCA launching a capital campaign now?

We've reached a critical point in our growth where our current facilities, especially for Lower School, can no longer support the needs of our students. This campaign is a necessary next step to ensure we provide safe, permanent, and mission-aligned spaces for learning, worship, and community.

2. What exactly is being built?

We are constructing one 45,000 sq. ft. building with two major parts:

- A 23-classroom Lower School academic building
- A 500+ seat Performing Arts Center for chapel, fine arts, and events

The project also includes a cafeteria, playground, Lower School Innovation Lab, and offices for academic and spiritual support staff.

3. Is the school changing direction or focus?

No. LCA's core values remain unchanged. We will continue to prepare students academically, spiritually, and socially for God's call on their lives. This campaign strengthens our ability to fulfill that mission, not shift from it.

4. Is this financially responsible?

Yes. The school is following a careful financial plan that includes campaign fundraising, strategic borrowing, and stewardship of existing resources. Our goal is to minimize long-term debt while building the future responsibly.

5. Will this new building impact tuition?

We are looking to raise the funds for this building through the Beyond campaign and not rely on tuition revenue. While an annual increase in tuition should always be expected, we are not increasing tuition to offset the construction costs.

6. How will this benefit my child specifically?

Every LCA student will benefit. Younger students will be moved out of aging modular units into fresh, secure classrooms. Middle and Upper School students will gain more space, better facilities, and an optimized schedule for chapel, athletics, and instruction. The entire campus experience will improve.

7. Will middle and high school students benefit too?

Yes. Middle School students will transition to The Lodge, giving them a home base. Upper School will gain additional classroom capacity. These shifts create more room across all divisions and strengthen the sense of community between them.



01



02



03

01. Celebrating 100 Days of School
02. Marching Band
03. Little Mermaid Performance
04. First Down Football Program
05. Moments with Mom
06. Chapel Service



04



05



06

8. How will this impact chapel, theater, and fine arts?

Chapel will move out of the gym and into a dedicated auditorium, enhancing the spiritual atmosphere and freeing up space for athletics. Fine Arts students will gain a professional-grade stage, performance space, and audience capacity that reflects their talent and effort.

9. Will the new building house enrichment and support classrooms?

Yes. Some of the enrichment classes will be relocated to the new space, and there will be a space for Lower School Academic Support.

10. What will happen to the current modular classrooms?

The Village modular units will be removed. That space will be repurposed for additional parking and future needs.

11. What are the plans for parking since The Green is frequently used for overflow?

Once the new building is completed, the modular units that currently make up The Village will be towed away. That area will then be resurfaced for additional parking.

12. Will safety and security improve?

Yes. The new layout will reduce access points, enhance visibility, and incorporate updated technology and infrastructure for student safety.

13. What is the timeline for this project?

With construction beginning in the Fall of 2025, our goal is to open the doors in the Fall of 2026.

14. How will you guarantee student safety while construction is taking place?

The area will be heavily gated to keep students out, and the contractors and construction workers will not have access to our current buildings.

15. Will naming opportunities be available?

Yes. Donors who make significant contributions may be able to name classrooms, common spaces, or other areas. Please contact the Advancement Office for more details.

16. How can I participate?

First and foremost, we invite you to pray. Then, learn more, attend events, spread the word, and consider how you might partner with us financially or through service. Every gift and every act of support helps open the door for what's next.

Making A Commitment

During Commitment Week, beginning November 17th-21st, every LCA family, grandparent, and alum will be given the opportunity to submit a commitment card for the Beyond Campaign. This is a three-year commitment over and above tuition and Lion Fund giving.

Thoughts on Generous Giving

The following are some ways to give that perhaps you haven't thought of before.

1. PRIORITY BUDGETING

You may choose to rearrange your priorities and give up something in your current budget in order to give more to the Beyond Campaign. Priority budgeting may mean postponing a planned expenditure such as a new car, vacation, remodeling, or other major purchase.

2. REDIRECT PRESENT EXPENDITURES

Often families have significant short-term expenditures for specific needs. Cash flow can be freed up when a loan is paid, tuition is no longer needed when a child graduates, etc. If a present expenditure will cease during the three-year campaign, would you consider using it towards your commitment?

3. INCREASES IN INCOME

You may receive periodic increases in salary or bonuses from your employer. The temptation is to automatically increase your lifestyle to fit the higher income. Could God be calling you to something else?

4. PERSONAL PROPERTY

Automobiles, motorcycles, art, jewelry, coin collections, and other valuable assets can be sold.



Giving from Stored Resources

APPRECIATED ASSETS

Gifts of appreciated assets are typically investment securities or real estate that are advantageous to both the giver and the school.

Unlike gifts of cash that have already incurred income tax, gifts of appreciated assets avoid a capital gains tax.

Please contact the LCA Advancement Office to learn more about how to make this type of gift at autumn@lcalions.com.

CHARITABLE IRA ROLLOVER GIFTS

While this type of giving does not apply to everyone, there are individuals and families within the LCA family that it does apply.

Charitable IRA rollover gifts apply to those who are over 70 1/2 years old and have an IRA account.

A gift from your IRA can be directly given to our school to support the campaign through a tax-free transfer of up to \$100,000 yearly.

Please contact the LCA Advancement Office to learn more about how to make this type of gift at autumn@lcalions.com.

A New Chapter For LCA Starts With You



Dear LCA Family,

The challenge before us is a large one.

The gift profile chart below shows how it will be possible for us to secure our goal for this campaign. The chart reveals that even with the large task God has given us, it is possible to move forward. It also shows that every commitment makes a difference.

As you look at the guide, your eyes will likely settle first on the level you have been considering for the Beyond Campaign. You can see how that commitment will strengthen our faith family and enable us to press forward with our vision.

However, before you make a commitment, I would ask you to pray about moving up at least one step on the chart. Only you know if that step is possible, but I encourage you to open your heart in the coming days to that possibility and let God shape your response.

Rachel

Rachel N. Ernst

Rachel Ernst, Head of School



Commitment Week begins November 17th.

We are asking all Commitment Cards to be handed in to the office during the start and end of school during this week.

NUMBER OF COMMITMENTS	AMOUNT OF EACH COMMITMENT
1	\$1,000,000
1	\$750,000
2	\$500,000
4	\$250,000
8	\$100,000
10	\$75,000
12	\$50,000
15	\$36,000
20	\$24,000
20	\$15,000
30	\$10,000
35	\$7,200
45	\$3,600

“Now to him who is able to do immeasurably more than all we ask or imagine, according to his power that is at work within us, to him be glory in the church and in Christ Jesus throughout all generations, for ever and ever! Amen.” - Ephesians 3:20-21





Pray for what is Beyond...

Pray for the Beyond Campaign.

We invite you to incorporate these daily prompts into your personal prayer time as we walk together through this season of growth and faith. Whether it's part of your quiet time or a moment of reflection during the day, let these themes guide your prayers as we seek God's direction in going Beyond.

MONDAY - Vision and Leadership

Lord, go before us and give wisdom to those leading this campaign. Strengthen their faith and clarity as they steward Your vision. *"If any of you lacks wisdom, let him ask of God... and it will be given to him."* - James 1:5

TUESDAY - LCA Families (Past, Present & Future)

Thank You for every family You've brought to LCA. Open doors for those yet to come. Provide peace and direction as families discern their place in this story. *"But as for me and my household, we will serve the Lord."* - Joshua 24:15

WEDNESDAY - Students and Their Journey Ahead

God, shape the hearts and minds of our students for Your purpose. Use this campaign to expand the impact of Christ-centered education in their lives. *"For we are God's handiwork, created in Christ Jesus to do good works, which God prepared in advance for us to do."* - Ephesians 2:10

THURSDAY - Faculty and Staff

Lord, bless those who teach, guide, and disciple daily. May they feel supported and energized as they invest in the next generation. *"Whoever brings blessing will be enriched, and one who waters will himself be watered."* - Proverbs 11:25

FRIDAY - Generosity and Provision

We trust You to provide. Move hearts to give boldly and joyfully, and multiply each gift for eternal impact. *"You will be enriched in every way so that you can be generous on every occasion..."* - 2 Corinthians 9:11

SATURDAY - Unity and Participation

Draw our community together in faith and purpose. Let every family see their role and step forward in prayer, presence, and partnership. *"Make every effort to keep the unity of the Spirit through the bond of peace."* - Ephesians 4:3

SUNDAY - Legacy and Impact

May this campaign go beyond buildings and budgets—may it shape lives for decades to come, all for Your glory and Your kingdom. *"From generation to generation we will proclaim Your praise."* - Isaiah 38:19

Want to do more with prayer over the campaign?

Reach out to Mr. EJ at EJA@lcalions.com



A few members of the dream team who are going Beyond for our students and families every day. Pictured (from left): Monica Landress, School Counselor, Laura Nabors, College & Career Counselor, and Sarah Teffertiller, Admissions Director. These ladies are investing in students and shaping futures to go Beyond.

From the Campaign Chair

Last fall I drove onto campus and felt an overwhelming sense of gratitude for the impact our school has had on my family.

I thought of the people who have invested in my children, the opportunities they have been given to experience the world, and the ways they have grown academically, socially, and spiritually. That sense of gratitude is what led me to join the capital campaign committee. I believe in the goodness of this place.

I am excited about the new building and all that it makes possible for students at every grade level. The name of the campaign, **Beyond: Opening Doors for the Journey Ahead**, matches the spirit of what is happening. Our new building will significantly enhance the learning experience for our children and create opportunities for more children and families to join us. I look forward to the day we will all be together in the new theatre for award ceremonies, concerts, theatre productions, graduations, and more.

I'll admit that the full cost of a capital campaign can feel overwhelming, but I believe that something special happens when we all bring our resources together to accomplish a large goal. I hope you'll take a moment to look over the two charts within this booklet. The breakdown makes the large goal feel manageable and it clearly shows that EVERY gift is significant.

I believe LCA is a special place. I believe we are in a special season. I hope you'll join me on the Journey.

Kindest regards,

Melinda Hollandsworth

Melinda Hollandsworth, Campaign Chair





Jesus Christ the Eternal Son
(Holy Spirit)



*Heavenly Father,
Thank You for the open doors You've set before
us and for the new opportunities that lie ahead.
We are filled with gratitude for Your goodness
and the many blessings You continue to pour
out on our community. As we move forward in
this new season, we hold fast to the promise
in Deuteronomy 31:8, that You go before us,
preparing the way. We trust You to be the lamp
to our feet and the light to our path. Though we
cannot see the full picture, we know You can.
Your plans are always for our good and for Your
glory. Give us strength when the journey feels
long, and wisdom to walk faithfully in step with
You. With joyful hearts, we look ahead with
expectation, believing that You are able to do
immeasurably more than all we ask or imagine.
By Your Spirit, lead us forward in faith, unity,
and purpose. Take us beyond what we've
dreamed, beyond what we've planned, and
beyond what we thought possible; for
Your name and for Your kingdom.*

*We pray this in the name of Jesus,
Amen*



2575 Highway 81
Loganville, GA 30052

770-554-9888
lcalions.com/beyond



BEYOND
FOR THE JOURNEY AHEAD