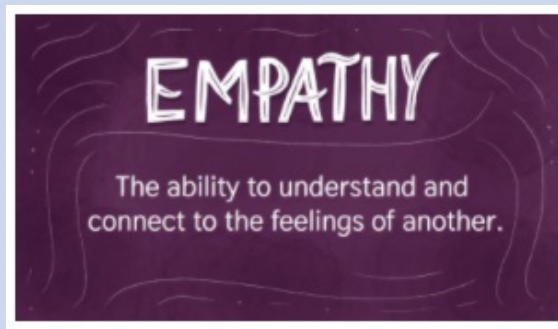




Stillaguamish Valley Learning Center Family Newsletter



Looking Ahead:

- 12/20: Elementary Winter Concert @ 1:30 (parents welcome)
- 12/21: Middle School assembly (12:40 PM)
- 12/22 - 1/5: Winter Break
- 1/8/24 - Back to School!
- 1/9 - 1/11: RAN assessments for K - 1
- 1/10: CogAT assessments for 2nd grade
- 1/15: No School MLK Jr. Day
- 1/29: No School - Teacher Work Day
- 1/30: Second Semester begins

Here's what is happening this week:

Monday - December 11th:

- Monday Enrichment Classes
- ASD Board Meeting 6 PM
 - SVLC Student Presentation

Tuesday - December 12th:

- K - 8th on campus
- Germ Busters coming to Kinder and 1st-grade classrooms
- Visit from Dr. Sweeting and ASD Board Members

Wednesday - December 13th:

- K - 8th on Campus
- State Board of Education visiting 1st Grade classroom
- SVLC Parent Club Meeting in the Multipurpose Room - 3:30 PM

Thursday - December 14th:

- Safety Drill

Friday - December 15th:

- Monthly Progress/Intervention Meetings

SVLC - Program Updates



SVLC UPDATES

Monday Enrichment Courses - Updates!!

- **We will be changing the class times for Monday Enrichment Courses beginning on February 5th, 2023.**
 - All classes (grades K - 8) will be from 12:30 - 1:30 and 1:30 - 2:30.
 - Lunch will be served at 12:00
 - Chess club will begin at 11:30
 - During our January Progress Meetings, students and parents will sign up for courses.
- **We will be canceling Monday Enrichment Courses on January 8th for ELEMENTARY ONLY.** Middle School classes will continue as scheduled.

Arlington Online Program (AOP)

- Please make sure you are logging into your courses each day during the week. Daily progress is very important to the success of the program.
- A reminder that you must complete a weekly check-in every week in order to stay in the program. Weekly check-ins consist of a two-directional academic conversation between the student and their teacher.
- We have loved seeing our AOP students on campus! Please remember to check in at the office before going to the AOP lab.

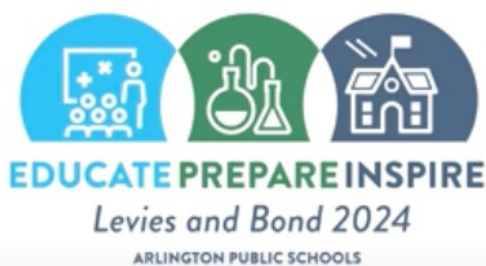
SVLC On-Site Students

- Please remember to call our Attendance line to report an absence.



Video - What's on the February 13, 2024 ballot for Arlington Public Schools?

We are asking the community to consider three measures that work together to support our students, schools, and staff. They are:



- Prop. 1: EP&O levy renewal
- Prop. 2: Capital levy renewal
- Prop. 3: Middle School Bond

Learn more about the measures by watching this short explainer [video](#).

Tuesday

- Mini Cinnamon Rolls
- Corn Dog and Crinkle Cut Fries

Wednesday

- Apple Frudel
- Cheesy Breadsticks with Marinara Dipping Sauce

Thursday

- Super-Sized Cereal
- Chicken Alfredo



Go. See. Do.

Go. See. Do. is a member-led group of teens (age 13 and older) who, with the help of their parents, "go, see, and do" different activities and events around the community.

Group members meet monthly in person or virtually to share their unique interests, experiences, and ideas and plan adventures to attend as a group. Anything from cooking classes, trips to the zoo, or hiking someone's favorite trail!

As many, or as few, activities can be planned and the date, time, location, and cost of the activity will be posted to sign up for. Parents will give permission, transport, and attend events just like they would if their kid was meeting up with a friend. Parents are responsible for funding their child's adventures.

The idea of "Go. See. Do" is to develop an encouraging and supportive environment for teens who strive to find like-minded friends who share their interests, and for parents to

meet other families who share the same interests as them.

So let's GO rollerskating! Let's SEE a hockey game! Let's DO something we haven't tried before with new and old friends!

This group is founded by Ayden Stecher. Ayden is a neurodivergent teen who loves meeting new people and wants to explore the world and try new things with as many people, as great as her, that she can find. To join, please sign up at the sign-in sheet in the office - please see Mrs. Wiersma. The sign-up sheet requires a parent's email and phone number. Please send those with your student.



When:

Monday's at 11:15 - 12:00

Where:

Multipurpose Room @ SVLC

Who:

Students in grades 2nd - 6th
Please sign up in the office

Questions about Chess Club??

Talk with Noah, Brodeck, or Mrs. Marsh

We are looking for a parent supervisor for this club! Please reach out to Mrs. Marsh or Mrs. Wiersma if you are available and willing to donate your time! Thanks

Possible School Schedule Change	School Starts	School Dismisses
Two hour delay	Two hours later than regular times	Regularly scheduled times
Early dismissal	May be regular or delayed times, watch for message from district	Earlier than regularly scheduled times
Closed	Schools will not open	Schools will not open

We are officially in the season where severe weather or other emergencies may cause changes to the school day. When this happens, schools may need to start late, dismiss early, or close.

Two-Hour Delay

If there is a two-hour delayed start, the following changes will apply:

- School at all buildings will start two hours later than regular
 - At SVLC, onsite classes will begin at 11:00, doors to classrooms will open at 10:50 AM
- Limited bus transportation and no out-of-district transportation
- Athletics and after-school activities may continue as scheduled but they may also be canceled. Please monitor school communications for updates on the status of these events.

Early Dismissal

With this option, school is closed earlier than regular times to respond to weather or other conditions. Families may pick up students from school and we will transport bus riders home on their limited routes. Dismissing school early is generally an emergency action because we need to verify with parents that someone will be at home if school is dismissed early.

Schools Closed

Depending on the weather conditions, canceling school might be an option to keep our students and staff safe on treacherous roads. Athletics and after-school activities may continue as scheduled but they may also be canceled. Please monitor school communications for updates on the status of these events.

Limited Transportation

In adverse weather, bus routes may be limited to main roads. We will provide notification to the community if we must use limited transportation routes.

How we will communicate information about changes to school schedules:

- School Messenger (Emails and/or phone calls and/or text messages)
- Flash Alert Newswire (FlashAlert.net) (See below)
- Social media
- Home page of district website (www.asd.wednet.edu)
- Broadcast Media

How can I find out if there are changes?

Arlington Public Schools uses FlashAlert Newswire to alert the media and community about school delays and closures. Parents, staff, and community members can sign up for these notifications for free by going to this link:

<https://www.flashalert.net/signup.html>

FlashAlert will send out email and/or text notices to you. Please note that you will need to log into your FlashAlert account at least once per year to keep it active. Reminder notifications will be sent to you before the account is closed.

While we know that our students and families are best served when we are open, our main concern is the safety of our students and staff. Typically, decisions regarding schedule changes are made in the early morning before school. This allows for the most current weather information to factor into the decision. This information is generally posted by 5:30 a.m. When it is necessary to close school due to extreme weather conditions or other unusual circumstances, announcements will be made on local radio and TV stations early in the morning. Please do not call the school office.

We understand that decisions about school schedules and bus route changes have an impact on our families and staff. We appreciate your patience during these situations.

Does your student need new school clothes?

Operation School Bell, sponsored by the Assistance League of Everett, provides new clothes to students who demonstrate financial need and attend school regularly.

Permission for this service must be granted to school personnel by a parent/guardian. If you need this service or know of someone who does, please contact our student support advocate, Rachel Miller. You can reach her by phone (call or text) at 360-386-5972 or by email at Rachel.Miller@asd16.org.

SVLC Parent Club

--	--



Email our SVLC
Parent Club

Because the school can not give out family email addresses, please click on the link above, and send us an email letting the Parent Club know that you would like to be on the communication list.



SVLC Mission/Vision Statement

Vision:

Stillaguamish Valley Learning Center envisions a partnership between home, school, and the community where each is an active participant in student-centered academic and social-emotional growth.

Mission:

With student learning as our primary focus, we are committed to:

- A unique instructional design where individual student needs are met
- Project and problem-based learning opportunities to promote deep understanding by means of rich tasks
- Long-term relationships with families to encourage life-long learners



Watch our Facebook page!

We will posting "Stilly Shout Outs" to celebrate our awesome SVLC students, grades K-12!

Stillaguamish Valley Learning Center
| [Website](#)

