



Oak View Middle School
Transition to a
PreK-8 School

April 7, 2026

What is Changing

- Current structure
 - Grades 5 – 8

- Future structure
 - Grades PreK – 8

School Identity and Naming

- School name: Oak View K-8 School
- School mascot: Panthers
- School colors: Blue and gold

Why Transition to a PreK-8 model

- School boundary zone changes
 - Alachua County Public Schools (ACPS) provides a zoned school for all students living in a zoned area to ensure adequate space and maintain access and flexibility for all residents
- PreK- 4th grade offering for Newberry families
 - ACPS believes in the importance of neighborhood schools in the cities outside of Gainesville as has been the practice in Alachua, Archer, Hawthorne, and Newberry
 - Expanding Oak View into a PreK-8 builds on that foundation creating a more seamless and connected educational experience

Qualities of a PreK-8 model

- Siblings attend school on the same schedule, simplifying family logistics
- Student experience no school transitions, including smoother path through 6th grade
- Long-term relationships with teachers, staff, and peers strengthen connection and belonging
- Stronger family-school partnerships develop over time
- Consistent services and progress monitoring support steady academic and emotional growth, with shared specialists such as Exceptional Student Education (ESE) teachers, reading interventionists, and school counselors

Qualities of a PreK-8 Model

- Increased collaboration between elementary and middle school educators improves instructional continuity
- Reduced transition-related academic decline which supports sustained achievement
- Programs are sustainable long term
- Located on existing middle school campus with access to established athletic facilities

Qualities of a PreK-8 Model

- Large scale studies show higher achievement in math and reading, particularly in grades 6 – 8
- Students often experience less achievement loss during transitions from elementary to middle school
 - Better confidence and engagement
 - Fewer behavioral issues
 - Greater sense of belonging
 - Stronger family engagement and stability
 - Robust school identity and culture
 - Sustained quality relationships with staff

Transition Timeline

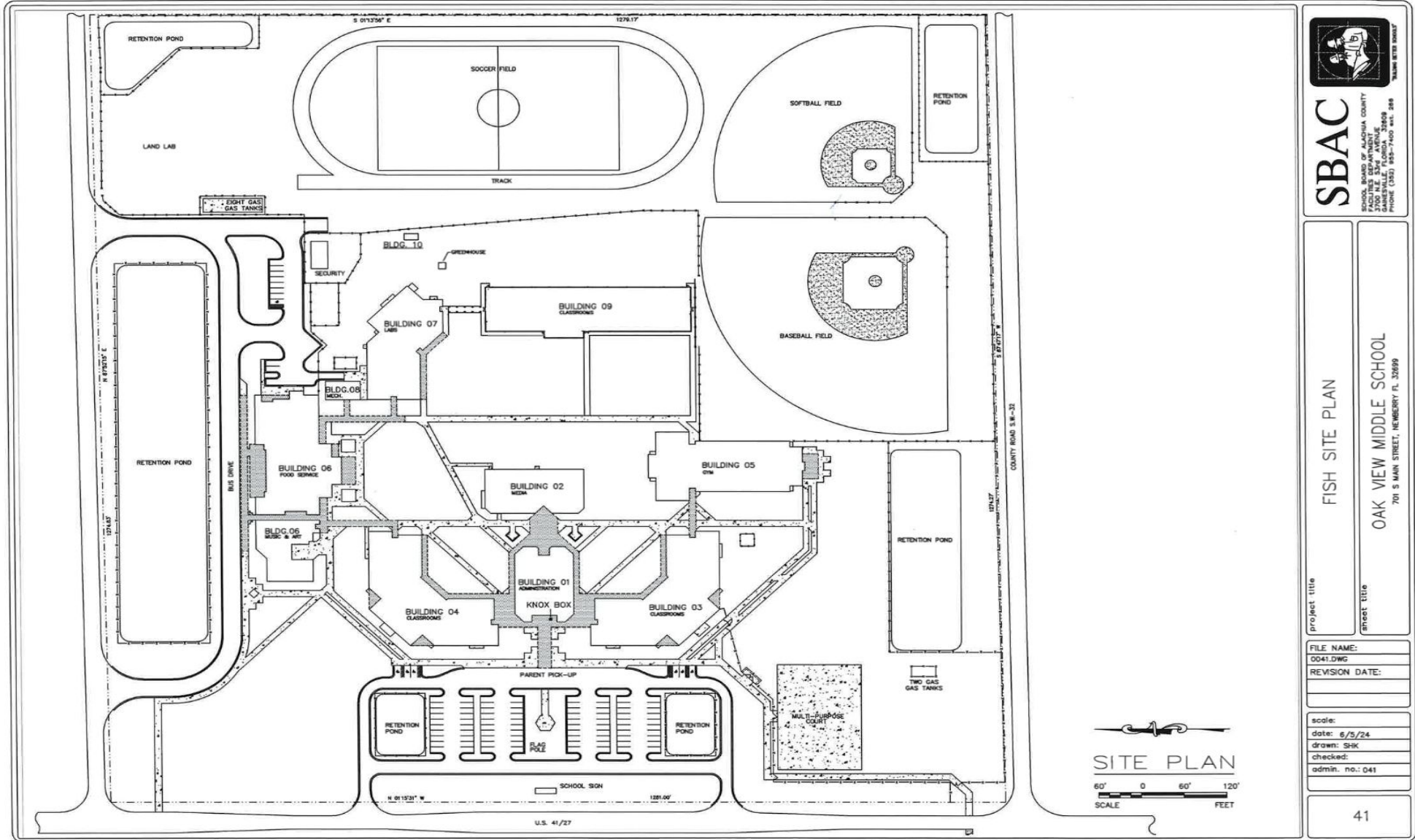
Key Happenings

- First transition events:
 1. Soccer field moved - DONE
 2. Construction fencing installed - DONE
 3. Track is demolished - DONE
 4. Movement of modular classrooms and modular buildings
- Opening of the PreK-8 Model
 - August 2026

Transition School Design – Key Changes

- Addition of PreK – 4th grades
- Increased enrollment capacity
- Added specialized spaces
 - PreK ESE – 4th grade classrooms
 - Art and Music classrooms
 - Warming kitchen and dining space
 - Media Center
 - Covered court for PE
 - 3 Playgrounds - PreK ESE; K-2; 3-5
- New Parent Vehicle Areas for Elementary Students

Current Oak View Campus



**TRANSITION SCHOOL - SBAC D2501
EXISTING PORTABLES RELOCATION, SITE DEMOLITION
AND WESTWOOD MIDDLE SCHOOL FIELD RESTORATION
SCHOOL BOARD OF ALACHUA COUNTY - GAINESVILLE, FLORIDA**

SCHOOL BOARD OF ALACHUA COUNTY

SUPERINTENDENT

DR. KAMELA PATTON

MEMBERS OF THE BOARD

THOMAS VU, CHAIR
DR. LEANETTA MCNEALY, VICE CHAIR
TINA CERTAIN
JANINE PLAVAC
DR. SARAH ROCKWELL

SHEET INDEX

- G-1 GENERAL PROJECT COVER SHEET
- DS-1 ARCHITECTURAL DEMOLITION SITE PLAN
- SA-1 ARCHITECTURAL SITE PLAN
- A-1 SIDEWALK AND COVERED WALKWAY PLAN
- C-1 NV5 SHEETS
- P-1 H2 SHEETS
- E-1 H2 SHEETS

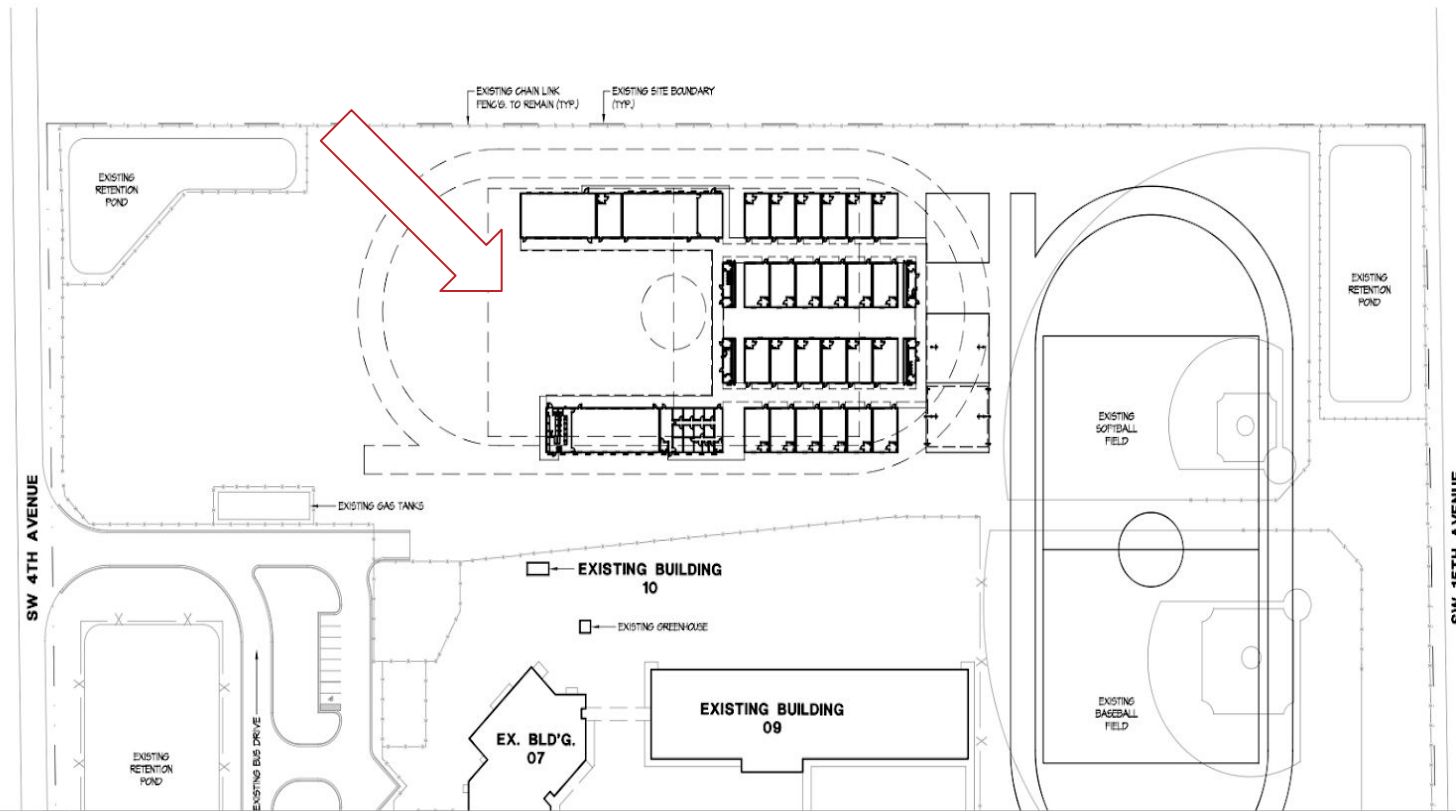
DESIGN CRITERIA

1. FLORIDA BUILDING CODE 8TH EDITION 2023
2. FLORIDA FIRE PREVENTION CODE 8TH EDITION
3. OCCUPANCY CLASSIFICATION IS EDUCATIONAL GROUP E
4. ALL PORTABLES COMBINED AREA = APPROX. 34,440 SF
5. PORTABLES ARE ONE STORY
6. PORTABLES ARE CONSTRUCTION TYPE IIB
7. PORTABLES STRUCTURAL FIRE-RESISTANT RATING REQUIREMENTS IS 0 HOURS
8. PORTABLES DO NOT HAVE A FIRE SPRINKLER SYSTEM

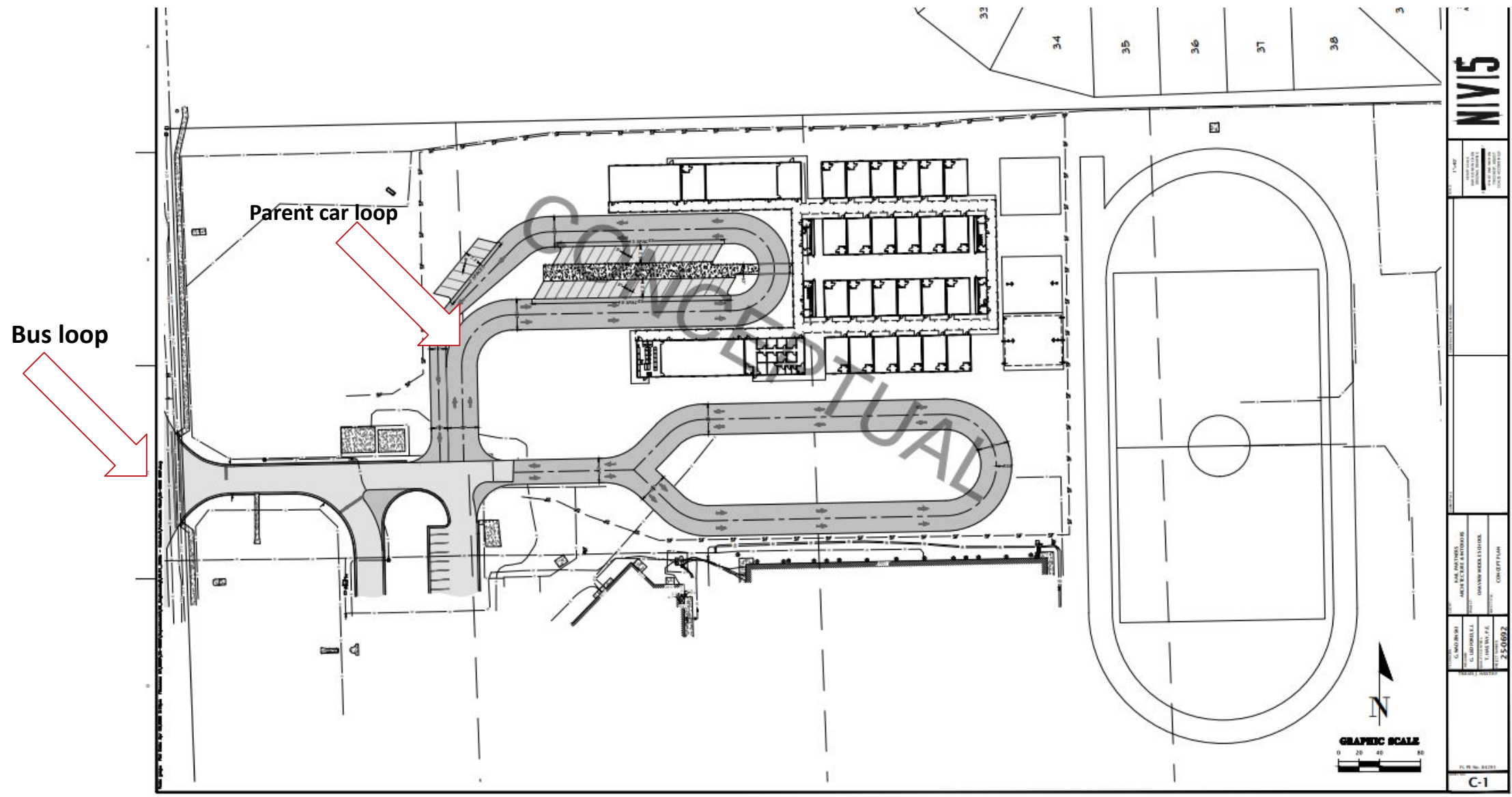
STATEMENT OF COMPLIANCE

TO THE BEST OF MY KNOWLEDGE, THESE DRAWINGS AND THE PROJECT MANUAL SPECIFICATIONS ARE COMPLETE AND COMPLY WITH THE FLORIDA BUILDING CODE 8TH EDITION 2023, THE APPLICABLE FIRE-SAFETY STANDARDS AS DETERMINED BY THE LOCAL AUTHORITY, THE APPLICABLE ALACHUA COUNTY SCHOOL DISTRICT STANDARDS AND FLORIDA STATUTE 255.25'S

DEFERRED DOCUMENTATION



TRANSITION SCHOOL - SBAC D2501
EXISTING PORTABLES RELOCATION, SITE DEMOLITION
AND WESTWOOD MIDDLE SCHOOL FIELD RESTORATION
BOARD OF ALACHUA COUNTY - GAINESVILLE, FLORIDA





Transition School Modular Buildings



Transition School Modular Buildings



Transition School Modular Classroom



Transportation

- Car line procedures
- Separate parent drop-off and pick-up areas for elementary and middle school students
- Bus procedures
- Bus zones and timing
- Bus information will be available to families two (2) weeks prior to the start of the school year

Separating Elementary and Middle School Students

- Entrances/exits
- Hallways/wings
- Dining area and lunch schedules
- Recess and playground areas
- Outside athletic areas for physical education
- Arrival/dismissal location and procedures

Daily Schedule Overview for Grades PreK-8

- ***Proposed*** Start/End Times
 - Early release Wednesdays
 - Pending Faculty, School Advisory Council and School Board approval of a waiver
- Student Day: Differences by grade bands
 - Grades PreK-5
 - Monday, Tuesday, Thursday, Friday : 8:00 am – 2:07 pm
 - Wednesday: 8:00 am – 12:52 pm
 - Grades 6-8
 - Monday, Tuesday, Thursday, Friday: 8:00 am – 2:14 pm
 - Wednesday: 8:00 am – 12:53 pm

Center for Advanced Academics and Technology Magnet

- Students currently enrolled in the magnet program will remain enrolled in the magnet program
- Expanding the number of seats in the magnet program is currently under review

Specialized Programs and Opportunities

- Exceptional Student Education services will be provided to meet the needs of students with disabilities at all grade levels - this includes self-contained classes
- The Safety Patrol Organization will be available for 5th grade students beginning in the 2026-2027 school year

Specials Information: Grades K-5

- Specials Classes
 - Art
 - Music
 - Physical Education

- Decisions related to Specials classes offerings are determined by the Principal and worked into the master schedule during the summer for implementation in the fall

Extended Day Enrichment Program

- Available hours
 - End of school day until 6:00 pm
 - Elementary and Middle programs are separate and distinct from one another

- Enrollment process
 - Wednesday, May 6 - Kindergarten Kick-Off for incoming kindergarten students
 - Thursday, May 7 and Friday, May 8 - All current EDEP families
 - Monday, May 11 - All Alachua County Public School families
 - Current Middle School program has registration cards for both programs

Student Support During Transition Year

- Academic support
 - Progress monitoring
 - Small group support
 - Aligned curriculum PreK-8
- Resiliency supports
 - Open House - familiarizing students with campus and processes
 - Peer/Buddy Programs
 - Extracurricular activities
 - Letters to families with links to resources (e.g. [ParentGuidance.org](https://www.parentguidance.org))
 - Mental Health Resources document
 - School counselor, social worker, and other mental health support and/or partnerships with Telehealth
 - Reemphasized calm spaces in classrooms
 - MTSS framework for interventions
- Orientation
 - Campus tours and meet-the-teacher events
 - Elementary family orientation nights
 - Middle school reset sessions

Voluntary PreK Program

Voluntary Pre-K (VPK)

- Students must be 4 years old on or before September 1st, 2026
- Full school day program
- Hands-on, nurturing learning environment
- Kindergarten readiness focus
- Two steps to apply
 - To apply for the Alachua County Public Schools' VPK Program, submit an application online at:
www.tinyurl.com/ACPS-VPK
 - To apply for your child's VPK Voucher (Certificate of Eligibility) go to:
<https://familyservices.floridaearlylearning.com>

Family Engagement and Communication

- How families will stay informed
 - Meetings
 - Newsletters
 - Website updates
 - Direct messages through the Apptegy Alert system (phone messages, email, and text)
 - Mobile app
 - Parent Teacher Association (PTA)

Visiting the School

- When families/students can tour
 - To be scheduled
- Kindergarten Kick-off
 - May 6, 2026 at 3:30 pm
- Orientation events
 - New students
 - To be scheduled
 - All existing students
 - To be scheduled

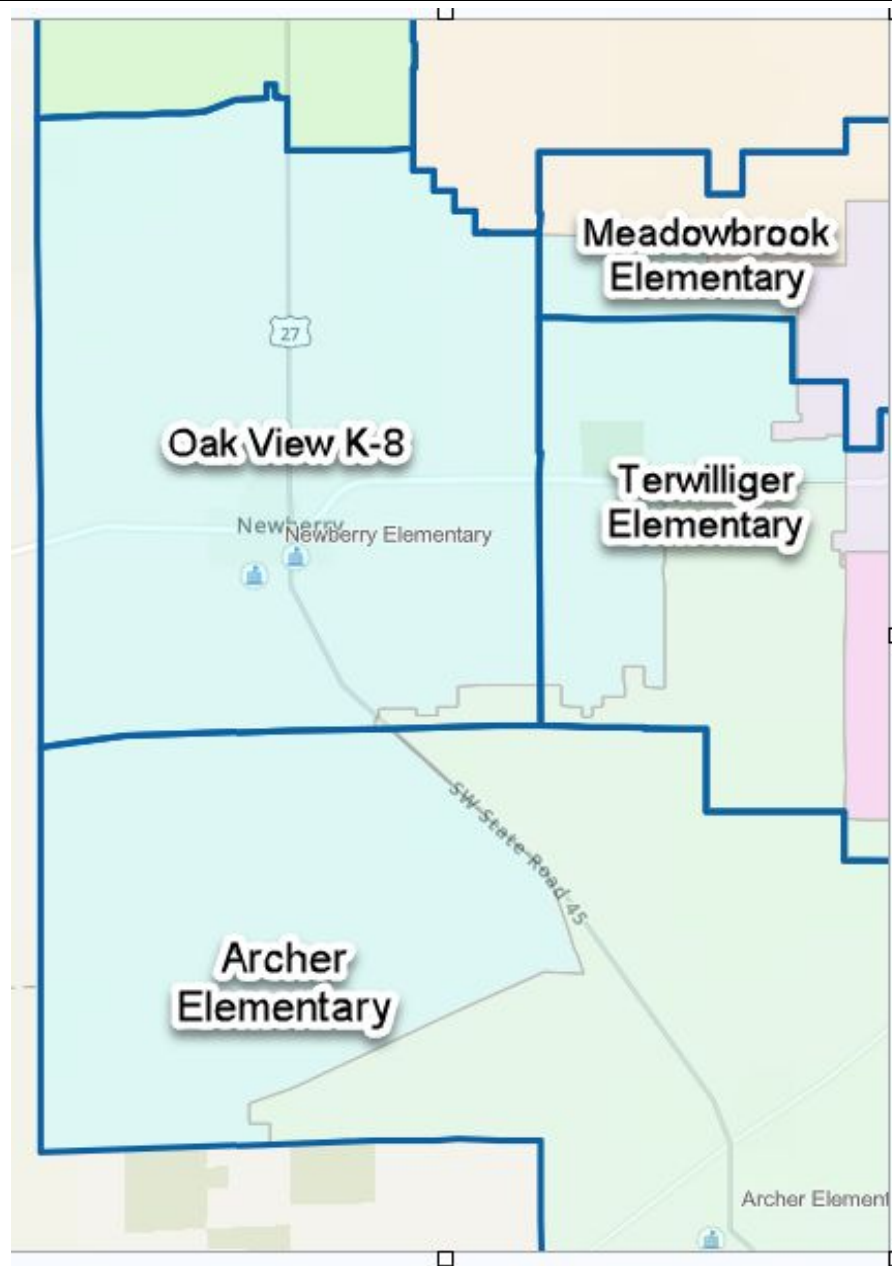
Registration and Enrollment

- Enrollment
 - Current Oak View and Newberry Elementary students will automatically be enrolled to their newly zoned school (Oak View, Archer, Terwilliger, Meadowbrook, Fort Clarke, Kanapaha, etc.)
 - If your zone remained Oak View and/or you are a current magnet student at Oak View, you will remain at Oak View
- Required documents
 - None needed unless there has been a change in address or other student information
- Where to get help
 - Contact your zoned school

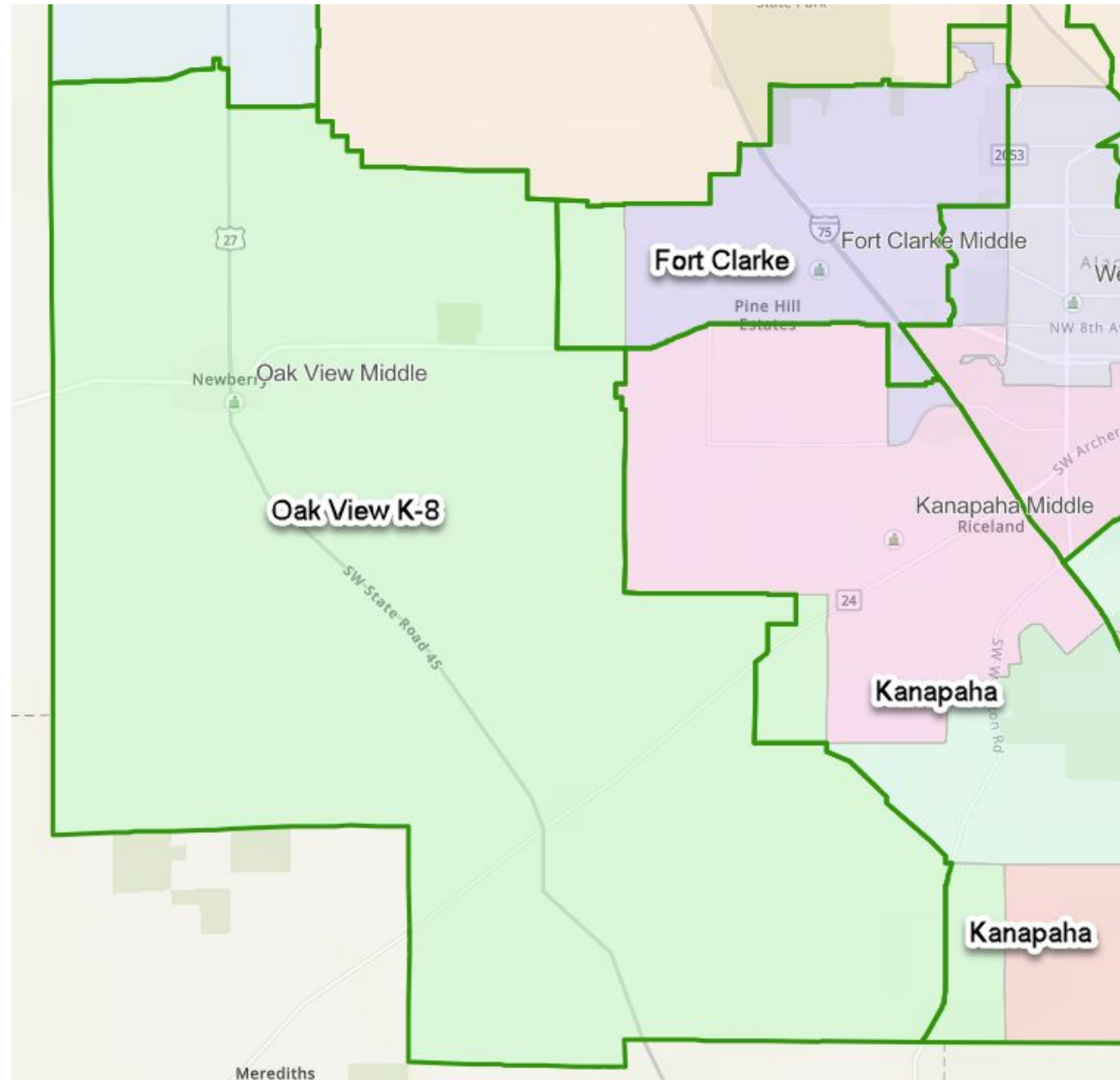
School Zone Boundary Changes

- Revised boundary map
 - See the interactive map at www.alachuaschools.net/enrollment using the link to Find Your Schools 2026-2027 School Year
- Effective date
 - Monday, August 10, 2026

Elementary School Revised School Boundaries



Middle School Revised School Boundaries



Zoning Exceptions and School Choice

- Who qualifies for exceptions
 - Students entering into the final grade at their assigned school and are reassigned to another school pursuant to the District school zone amendments may submit a Zoning Exception Application to complete the final grade at their current school
- Application process
 - The application can be found at www.alachuaschools.net/zoning
- Transportation implications
 - Students on zoning exceptions and school choice are not provided district transportation

Common Questions About Student Needs

- Safety
 - Clearly defined spaces and schedules for elementary and middle school students
 - Enhanced supervision during arrival, dismissal, and transition times
- Class sizes
 - Remain aligned with state guidelines
- Staffing
 - Teachers and school counselors assigned by grade band and subject area expertise
 - Support staff allocated as needed

Plans for the New School Building

- Planning/Construction
 - Next step is to advertise two (2) Requests for Qualifications (RFQ) for Design Services and Construction Manager at Risk
 - Staff and community engagement will occur throughout the design process
- Timeline
 - Opening of the new buildings is to be determined
- Proposed Additions
 - New buildings to include permanent classrooms, media center, food service warming kitchen and dining spaces

Questions

This presentation is posted at:

[alachuaschools.net/
oakviewpresentation](https://alachuaschools.net/oakviewpresentation)





Welcome to Oak View PreK – 8 School
Go Panthers!

Thank you for being here!





Oak View Middle School ***Transition to a*** ***PreK-8 School***

April 7, 2026