

The background of the slide features a large, faint, red-toned logo of a tiger's head. The tiger is facing forward with its mouth slightly open, showing its teeth. The logo is centered and takes up most of the background space.

GRANBY HIGH SCHOOL TRACK AND FIELD

January 26, 2026

EXISTING SITE

Full-Depth Restoration (recommended)

To mitigate the risk of future settlement, we recommend that a full depth restoration of the field and track surface be performed prior to replacement of the surfaces. Full depth restoration shall include:

Site Preparation

- Strip, remove, and dispose of existing rubber track surface and synthetic turf field and crushed stone subbase.
- Excavate and remove the full depth of Fill up to a 5 ft depth beneath the track and field and 5 ft laterally outside the limits of the track. Within the limits shown on Figure 2, the northeast corner of the track is recommended to be excavated and removed up to 10 ft due to presence of deeper Fill materials that are unsuitable for subbase of the track.
- Segregate/screen/stockpile excavated Fill materials that are suitable for re-use as compacted granular fill beneath the track and field surface. Remove and dispose of unsuitable Fill material (buried topsoil, organic materials, wood, etc).

Reuse of any excavated soils will be dependent upon visual characterization of the materials and results of grain size analyses and laboratory compaction tests. Accordingly, we recommend to

GEOTECH REPORT

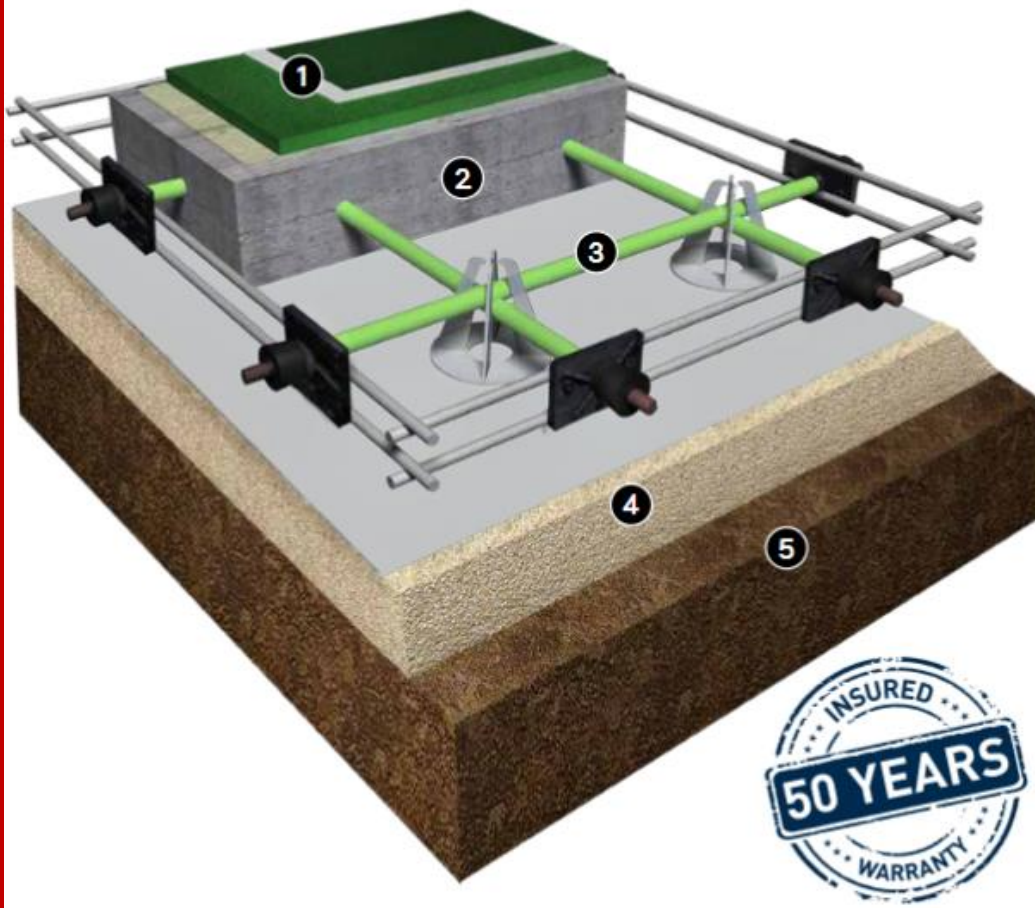
- Recommends full depth removal and replacement down to 5' and up to 10' in some areas.
- Reconstruction of this manner is very difficult and would require full removal the entire facility, including turf, track, pavement, drainage, all utilities, shoring of light poles, shoring for bleachers, site security, and only would come with a 1 year workmanship warranty



PROPOSED SOLUTION

MOISTURE-RESISTANT, PRECISION-LEVELED, **AND BUILT TO LAST**

A world-class court begins with a foundation that seamlessly blends precision and strength. Our state-of-the-art post-tension concrete system, ClassicCourt, is engineered to deliver consistent performance and unmatched durability. **Let's explore its design:**



POST TENSION CONCRETE TRACK AND FIELD

STRUCTURALLY SOUND

USED ON TRACKS, FIELDS, AND COURTS

CAN BE COMPLETED IN ONE SEASON

FULLY WARRANTED

50 YEAR STRUCTURAL WARRANTY



1 SURFACING SYSTEM
Choose from a variety of superior surfaces including acrylic sports coatings for tennis, pickleball and basketball, synthetic turf for fields, and synthetic track surface for running tracks.



2 POST-TENSION CONCRETE SLAB – 50-YEAR WARRANTY
Once poured and tensioned, the concrete slab remains under constant compression. This allows it to 'float' over the subgrade rather than being rigidly anchored, absorbing ground movement and preventing shifting, settling, and cracking.



3 POST-TENSION CABLES – MADE IN USA
ClassicCourt uses high-performance 1/2" U.S. steel cables fabricated with virgin grease, powder-coated hardware, and an exclusive green sheathing exceeding 50 mils in thickness for superior corrosion protection.



4 AGGREGATE & LINER
A precisely engineered aggregate base creates a stable and level platform, improving drainage and ensuring a perfectly uniform playing surface. A high-quality liner is placed on top to enhance moisture control, prevent material migration, and provide additional stability for long-term performance.



5 COMPACTED SUBGRADE OR EXISTING ASPHALT COURT
ClassicCourt can be installed on a new subgrade or an existing aged asphalt or concrete court. This flexibility reduces demolition costs and accelerates installation, saving costs and minimizing venue downtime.

CONSTRUCTION METHOD



PROPOSED PLAN



EXAMPLE PROJECT 1



EXAMPLE PROJECT 2



EXAMPLE PROJECT 3



EXAMPLE DOUBLE SIDED BLEACHER



EXAMPLE BALL NETTING



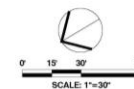
EXAMPLE SCOREBOARD



- NOTES:
- 1) ALL DESIGN AND EXISTING CONDITIONS MAPPING BASED ON AVAILABLE MAPPING AND SHOULD BE CONSIDERED APPROXIMATE.
 - 2) THIS DESIGN IS THE SOLE PROPERTY OF FIELDTURF, USA AND REQUIRES A CERTIFIED FIELDTURF INSTALLER AND BUILDER TO IMPLEMENT THE PROPOSED CONDITIONS.
 - 3) THIS DESIGN IS THE SOLE PROPERTY OF FIELDTURF, USA AND NO ATTEMPTS SHALL BE MADE TO DUPLICATE OR REPLICATE WITHOUT THE PERMISSION OF FIELDTURF.

GRANBY MEMORIAL HIGH SCHOOL TRACK & FIELD

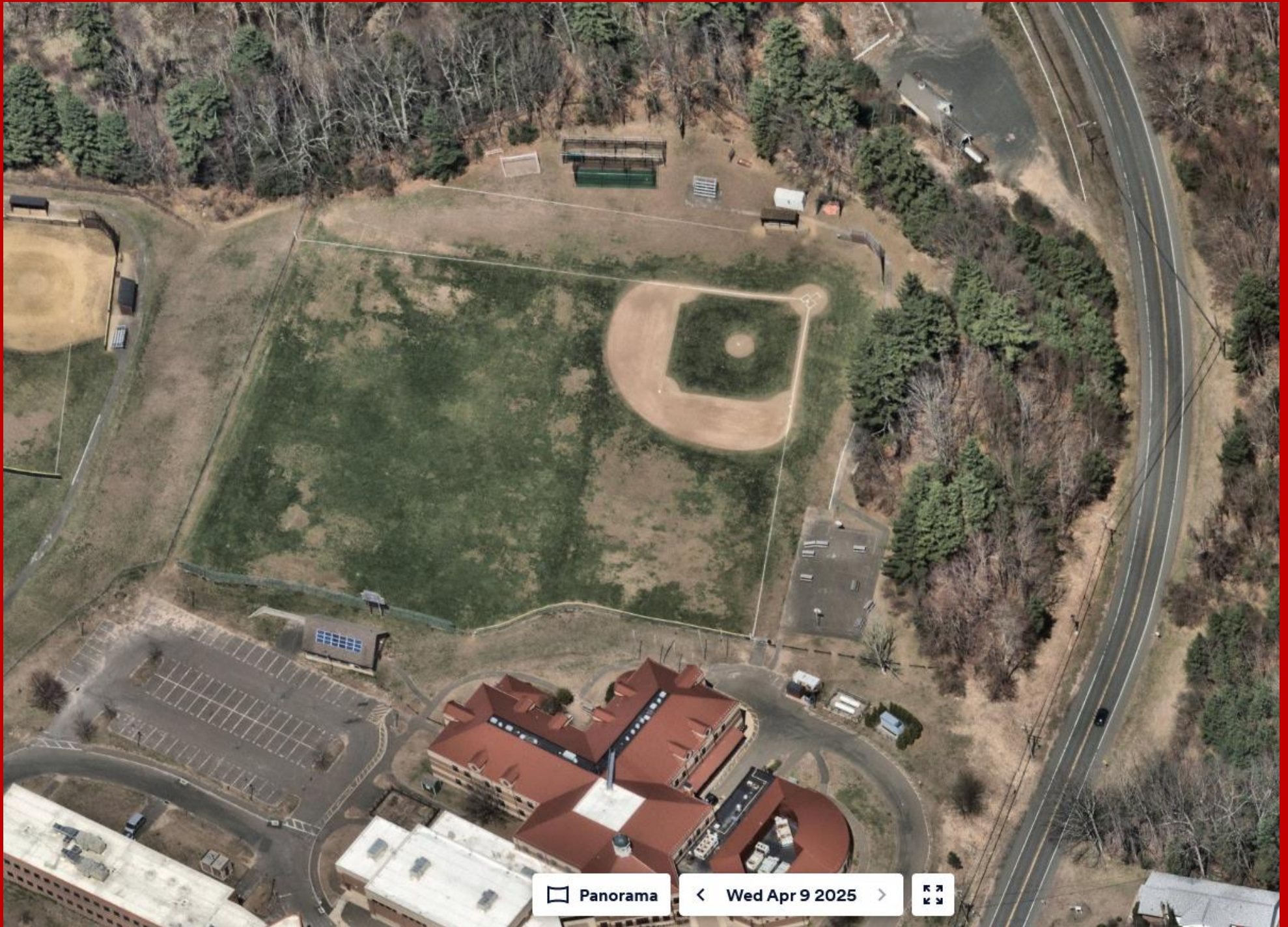
39 SCHOOL STREET
GRANBY, CONNECTICUT 06033



APRIL 15, 2025

TRACK & FIELD

BASEBALL / MULTIPURPOSE FIELD



BASEBALL / MULTIPURPOSE FIELD



EXAMPLE PROJECT

HIGH PROFILE SYNTHETIC TURF BASEBALL
FIELD WITH ALTERNATING PANELS



FIELD EDGE AND BASE

CONCRETE TURF ANCHOR CURB WITH
INTEGRAL FENCE POSTS. 8" STONE BASE WITH
2" TOPPING STONE AND 6" DYNAMIC STONE
BASE. SIEVE AND LA ABRASION TESTING TO
MEET FIELDTURF STANDARDS



SUBGRADE WITH COLLECTOR PIPE

LASER GRADE AND PROOF ROLL SUBGRADE,
PITCH TO COLLECTOR PIPE AT LOW POINT.
INSTALL 8"-12" COLLECTOR PIPE AND OUTLET.



EXAMPLE PROJECT

DOUBLE FIELD WITH OVERLAY:



HOME PLATE

ADJUSTABLE HOME PLATE SET IN CONCRETE PAN
REMOVABLE VELCRO BATTING AND CATCHERS
BOXES. 3 REPLACEMENT KITS INCLUDED



DUGOUT SHADE STRUCTURE

SHADE STRUCTURE DUGOUT ON CONCRETE
BASE WITH FENCE SURROUND



EXAMPLE PROJECT

EXAMPLE PROJECT

HIGH PROFILE SYNTHETIC TURF BASEBALL



PITCHING MOUND

CONCRETE MOUND FOR STABILITY AND



EASY CHANGE MOUND

FIELDTURF EASY CHANGE MOUND SYSTEM FOR GAME FIELD. REPLACEABLE SECTIONS OF MOUND SET IN CONCRETE PAN FOR EASE OF REPLACEMENT. 3 REPLACEMENT SETS INCLUDED.



EXAMPLE PROJECT

EXAMPLE PROJECT
FALL START FOR CONSTRUCTION FOR
SYNTHETIC TURF BASEBALL FIELD WITH
COMPLETION DURING WINTER MONTHS



BATTING TUNNEL

MEGA TUNNEL BATTING CAGE WITH POWER SUPPLY FOR PITCHING MACHINES



BACKSTOP AND HOME PLATE LOGO

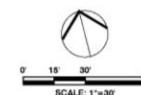
ALL BACKSTOPS TO BE 30' HT. TENSION
NETTING ABOVE 6' HT. HEAVY DUTY FENCING.
24' TALL NETTING ABOVE FENCE. AS
MANUFACTURED BY SPORTSFIELD SPECIALTIES
OR JAYPRO SPORTS

NOTES:

- NOTES:**
- 1) ALL DESIGN AND EXISTING CONDITIONS MAPPING BASED ON AVAILABLE MAPPING AND SHOULD BE CONSIDERED APPROXIMATE.
 - 2) THIS DESIGN IS THE SOLE PROPERTY OF FIELDTURF, USA AND REQUIRES A CERTIFIED FIELDTURF INSTALLER AND BUILDER TO IMPLEMENT THE PROPOSED CONDITIONS.
 - 3) FINAL LOCATIONS AND SIZES OF PROPOSED CONDITIONS ARE SUBJECT TO CHANGE.

GRANBY MEMORIAL HIGH SCHOOL BASEBALL FACILITY IMPROVEMENTS

**PLEASANT STREET
GRANBY, CONNECTICUT**



JANUARY 15, 2026

BASEBALL AND SOFTBALL

